



**SEE THE BIG
PICTURE AND
TRANSFORM
YOUR DELIVERY**

Contents

INTRODUCTION 3

How Mission Control Works 5

FEATURES 6

Methodology Support 7

Scrum 8

Kanban 10

Kanban + Story Points 11

Delivery 11

Automatic Roadmapping 112

Forecasting 13

Projections (Burnup) 14

Epic Tracking 15

Flow 16

Cumulative Flow 16

Cycle / Lead Time 17

Work WIP 18

Quality Tracking 19

Bugs 19

Support Tickets / BAU / Keeping the lights on 20

Efficiency 21

Tech Debt 22

Backlog tracking 23

Organisation Features 25

Initiative Tracking 25

Dependency Tracking 26

PRICING AND PLANS 28

First Step: Free 7-Day Trial 28

Test Flight 28

Rocket Ship 28

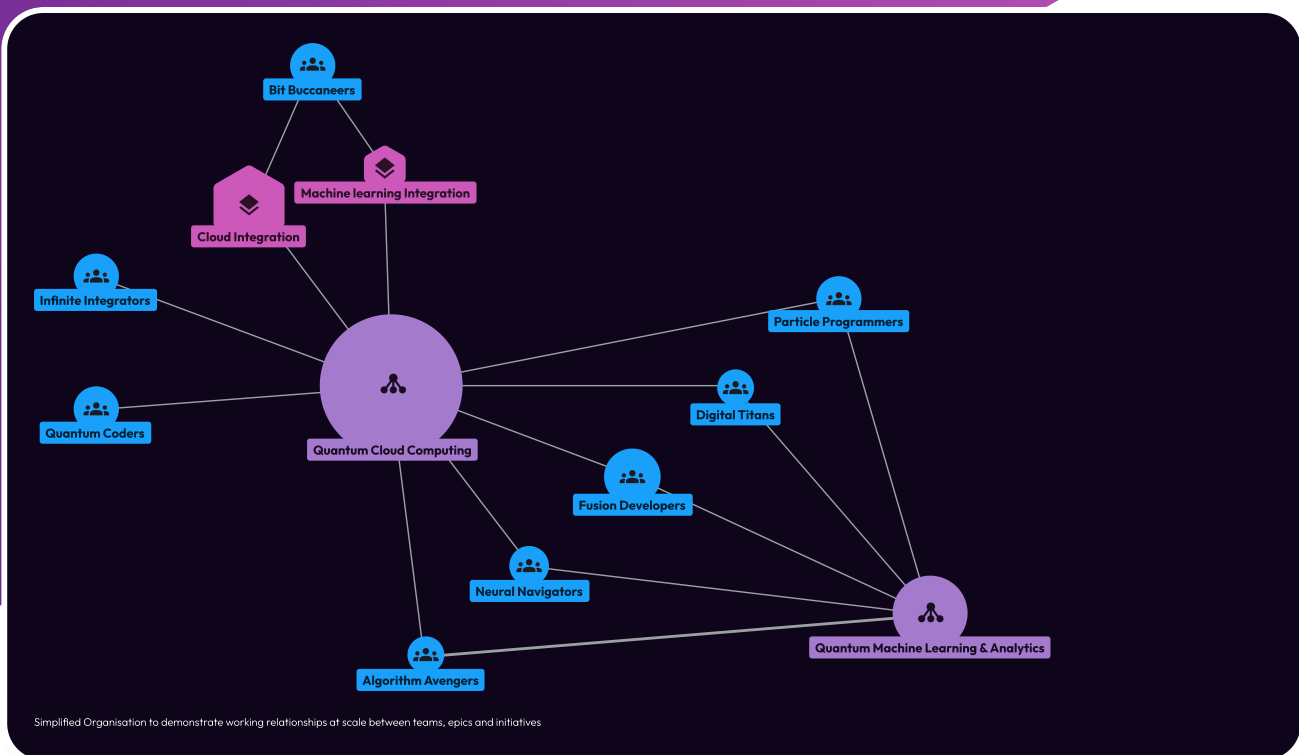
4. Bespoke Configuration: Contact Us 29

NEXT STEPS 30

FAQ 31

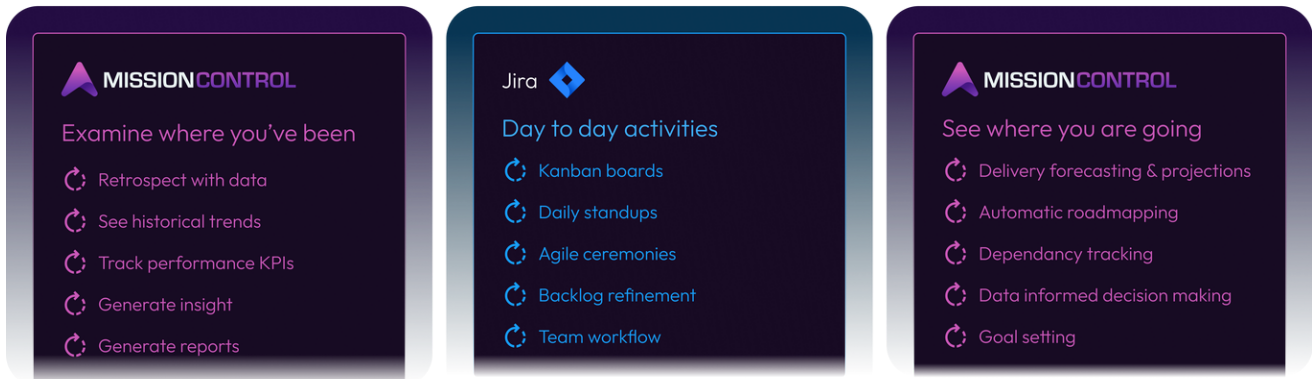
Introduction

Welcome to Mission Control, the cutting-edge platform by Methodshift that propels your agile delivery ecosystem into a new era of efficiency and insight. Just as NASA's Mission Control monitors and directs space missions with precision and adaptability, our platform serves as the command centre for your organisation's strategic project delivery.



Mission Control is the antidote to the disjointed and cumbersome tools that have long plagued large organisations in the agile delivery space. With advanced data analytics, AI, and a highly scalable cloud-based infrastructure, Mission Control unifies your agile delivery tools into one seamless, transparent and intelligent system.

Mission Control adapts to your Jira, and enhances it through intelligent and automatic reporting, allowing you to always have an up to date view of your teams and deliverables.



Our mission is to give you the tools needed to improve overall performance, inform decision making, reduce manual and bureaucratic work and reach new levels of efficiency through automation and transparency.

The setup is fast, the learning curve is flat, and the customer onboarding is personal – all combined to ensure your teams can focus on what they do best: delivering outstanding results.

Targeted at large organisations with multiple software development teams, Mission Control is here to simplify the complex. Our platform transcends traditional tooling, offering a transparent, adaptable, and consistent approach to agile practices. With Mission Control, you move from a top-down, bureaucratic, and siloed environment to an agile, transparent, and collaborative culture.

How Mission Control Works

Think of Mission Control as the central hub of your software delivery universe, where complexity is simplified and every mission is set for success. Here's how it propels your projects forward:

Step 1

Onboarding Your Teams

We start at the ground level by seamlessly integrating Mission Control with your existing Jira setup. This is normally completed with a Jira admin. After this is completed our one-on-one onboarding ensures that every team is familiar with the dashboard, tools, working agreements and insights available. We also offer initial performance insights and improvement areas in line with agile best practices.

Step 2

Laying the Foundations

Once your teams are onboarded, Mission Control begins aggregating data, offering a real-time view of progress & performance. This solid foundation allows for reliable tracking of larger strategic initiatives as they unfold.

Step 3

Scaling Up

As you add more teams, Mission Control scales with you. It's designed to aggregate data across multiple Jira instances and, in the future, other project management tools, ensuring a unified view regardless of the tools in use.

Step 4

Tracking Strategic Initiatives

With the foundations set, we shift focus to the broader picture. Mission Control enables tracking of high-level activities like strategic initiatives and inter-team dependencies. These features are customizable and can be added as bolt-ons, tailored to your organisation's specific workflow.

Step 5

Custom Configuration and Support

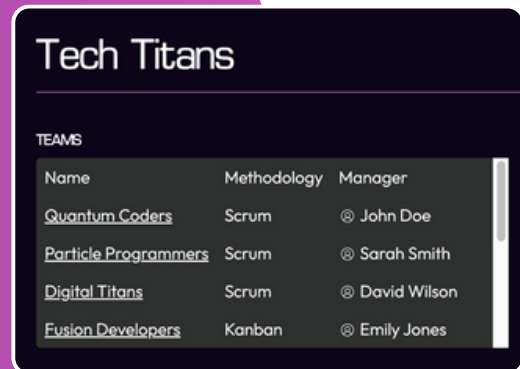
Our customer support is ready to assist with setting up any additional features. We'll work with you to ensure Mission Control aligns perfectly with your needs, offering free configuration and trials for all bolt-ons.

By moving away from a fractured system of add-ons and manual processes, Mission Control provides a unified, automated, and insightful path to agile excellence. Ready to launch? [Contact us](#) to get started on your journey to a clearer view of your agile landscape.

Team Features

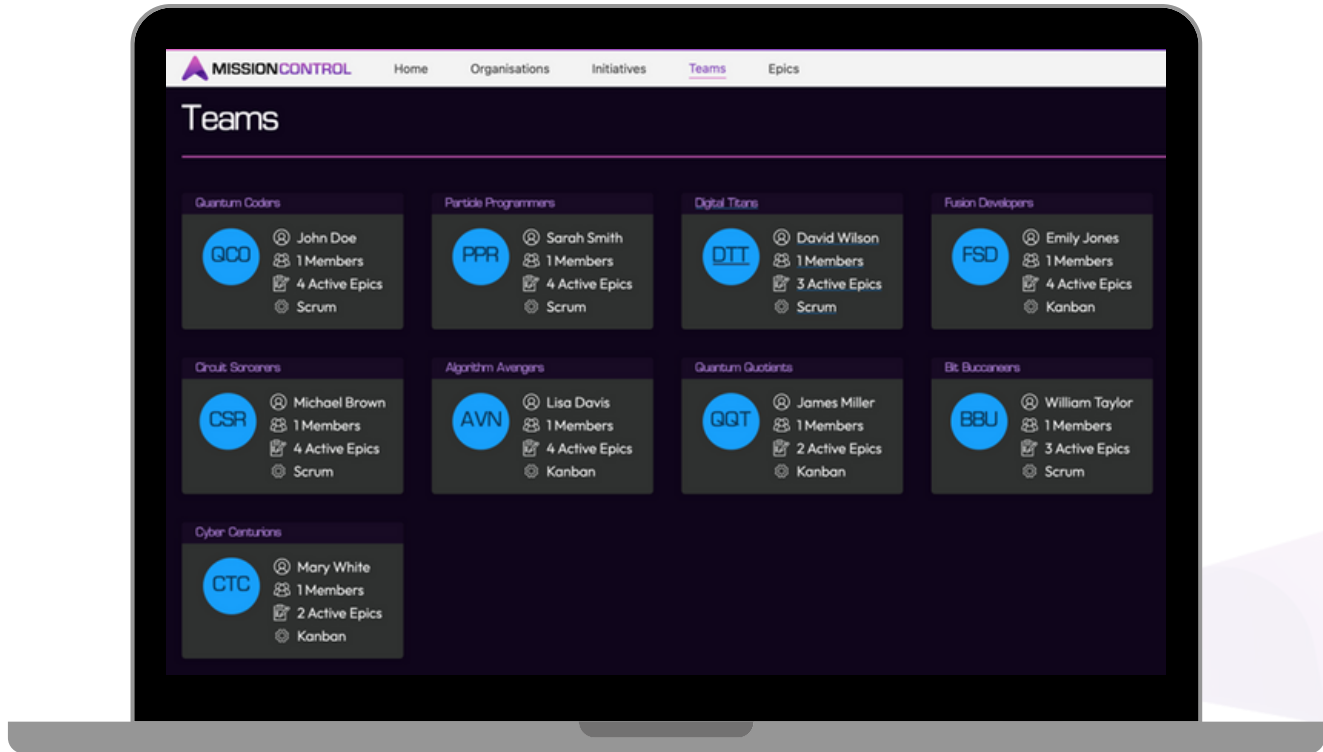
Teams are the fundamental unit of delivery for an organisation. Everything is built on their solid foundation, for this reason we are focused on giving the best and most insightful data insights to help your teams excel.

After onboarding teams can be viewed on the Organisation page:



TEAMS		
Name	Methodology	Manager
Quantum Coders	Scrum	@ John Doe
Particle Programmers	Scrum	@ Sarah Smith
Digital Titans	Scrum	@ David Wilson
Fusion Developers	Kanban	@ Emily Jones

They can also be found 'Teams' page alongside their designated team leader, methodology, active epic count and number of members.



Let's delve into the features supported at a team level.

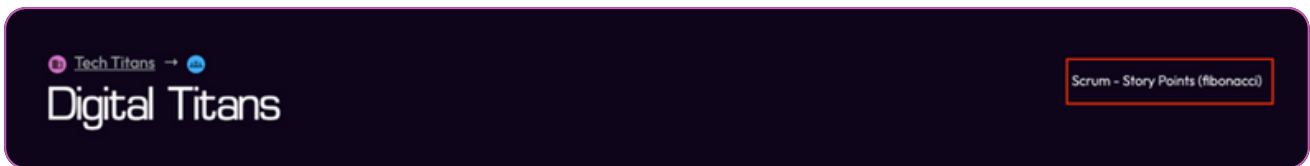
Methodology Support

FREE TIER, TEST PILOT.

At Methodshift we believe that your processes should drive your tools, not the other way around. Teams have their own unique ways of working and chosen methodologies and we feel that the tools you use should be clever enough to adapt to you.

To meet this challenge Mission Control has been built with intelligence, flexibility and adaptability from the ground up. It will detect your team's methodology and working practices automatically and adjust all reporting to reflect how your team works.

You can see the methodology and ways of working patterns that Mission Control has detected at the top of your team's overview page.



For example if your team is using Scrum and regularly Story Pointing delivery reports will use and display story points and velocity. Whether planning your next sprint or looking at the size of your backlog.

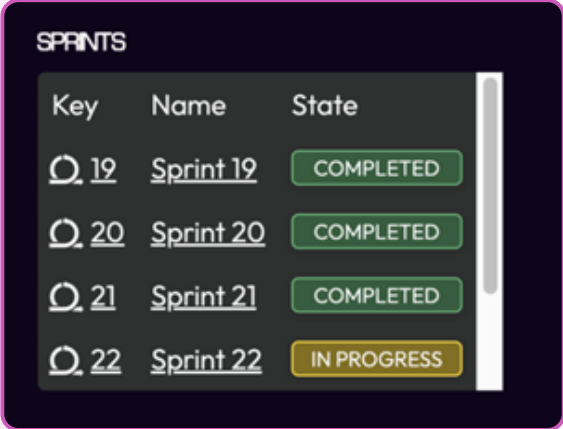


We also believe that even if a team is using Scrum there are still various Kanban related reports that can produce useful insights. For example we will track cumulative flow and conduct probabilistic forecasting for both Kanban and Scrum as the insights can be useful for both.

Scrum

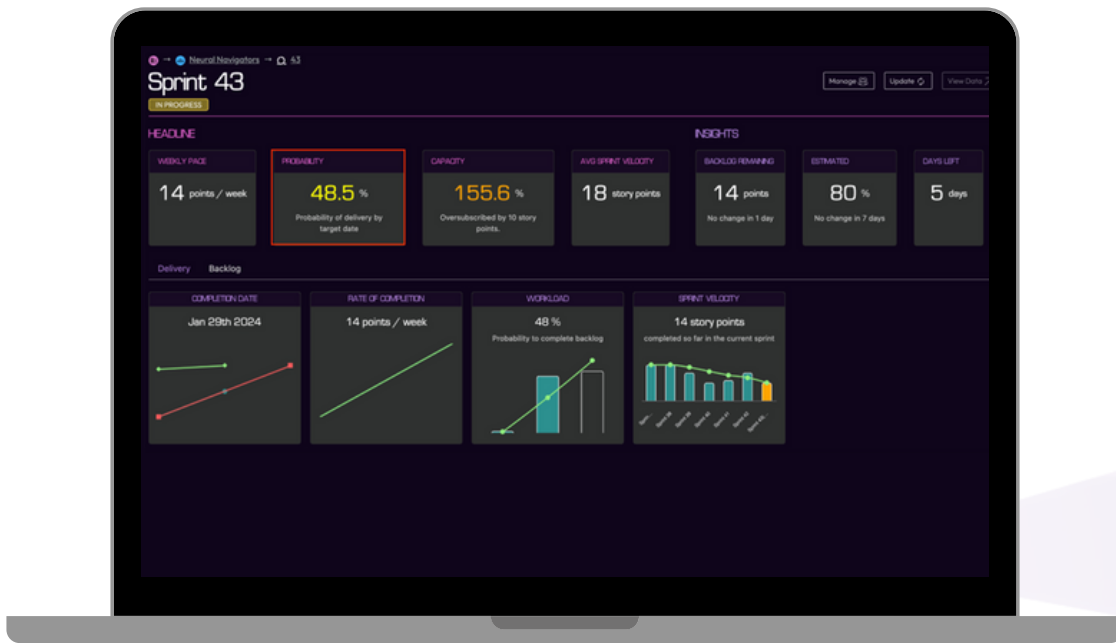
We automatically track past, current and future sprints and offer various additional tools to help you retrospect, plan and execute on them. If you are operating with the Scrum methodology, sprints will appear on your team's overview page.

The sprint overview page shows useful headlines at the top. Clicking on these headlines and insights will take you to a relevant report.

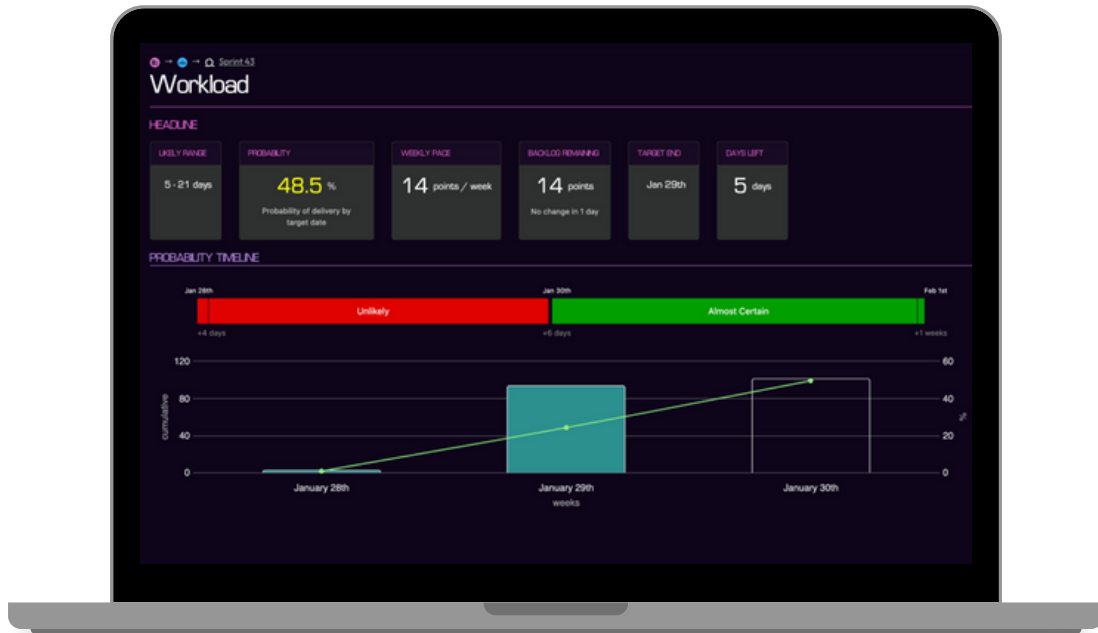


Key	Name	State
19	Sprint 19	COMPLETED
20	Sprint 20	COMPLETED
21	Sprint 21	COMPLETED
22	Sprint 22	IN PROGRESS

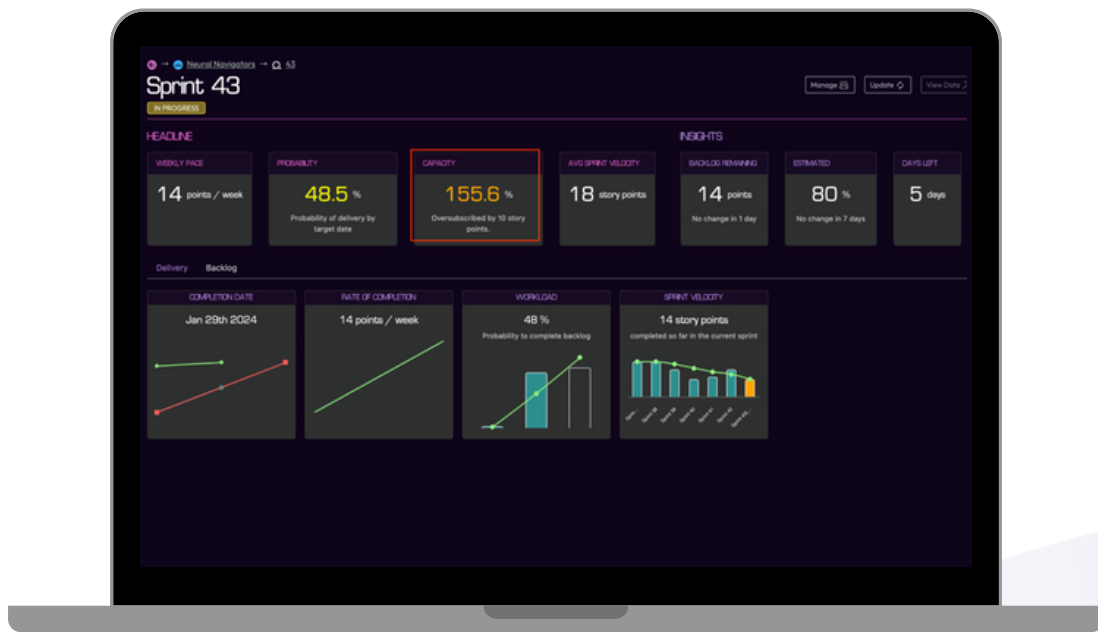
Mission Control uses the historical rate of completion by your team's sprints to work out a probability of delivering all work by the end of the sprint given the current content. It conducts this analysis for current and future sprints, helping you to plan.



Clicking on the headline will open the Workload report which gives more insight into the forecasting so you can better understand the probability of completing the sprint.



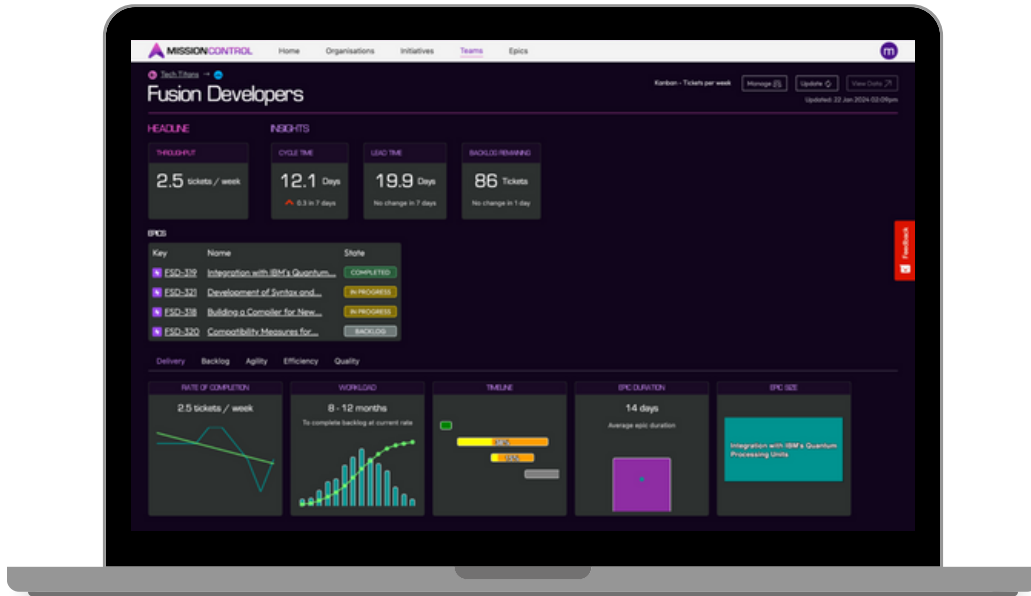
Mission Control also tracks sprint capacity, showing you if your sprint is currently over or undersubscribed and by what percentage (based on your team's historical velocity).



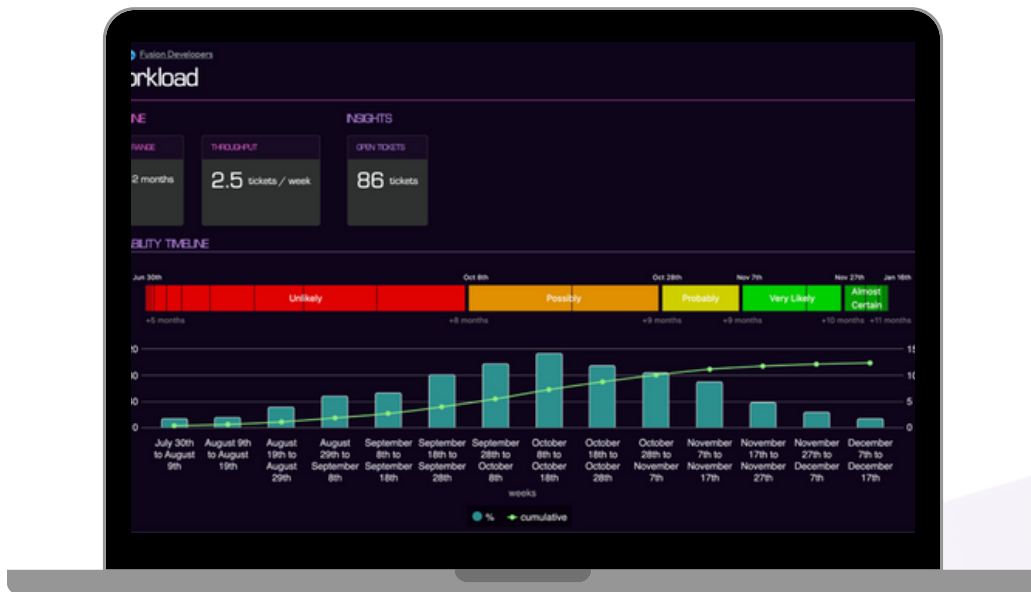
These are just a few of the features available to Scrum teams, you can see a live demo of a team running Scrum [here](#).

Kanban

Teams can operate in pure Kanban, seeing insights relating to their flow, focusing on probabilistic forecasting and building a roadmap built purely on tickets per week. Below you can see an overview page for a team operating with the Kanban Methodology



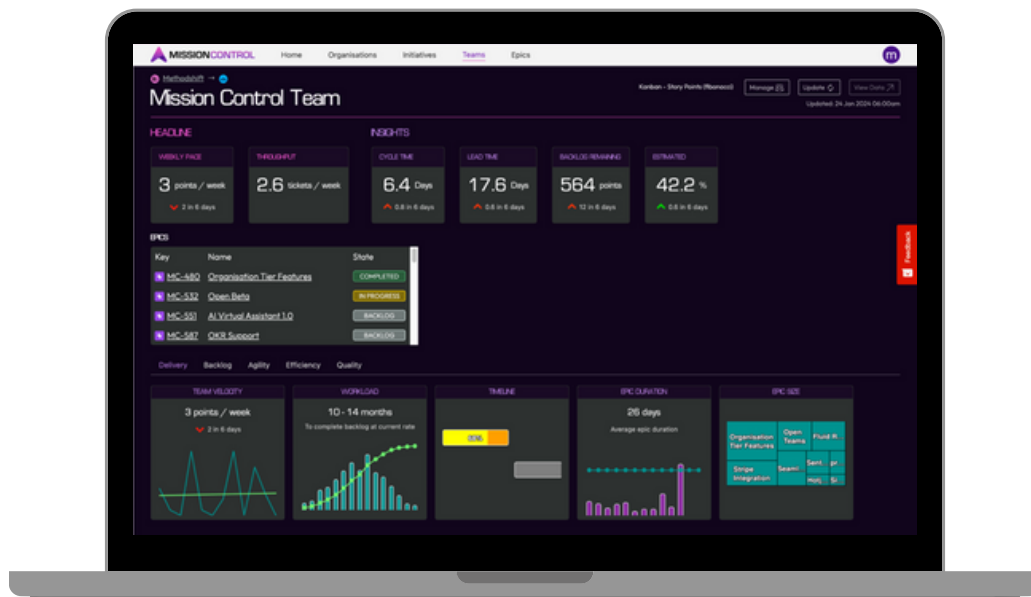
You can see a probabilistic forecast for the teams entire backlog here.



Probabilistic forecasting is also conducted for releases and each individual epic for a team. These are just a few of the features available to Kanban teams, to explore a live demo of a Kanban team please [click here](#).

Kanban + Story Points

Some teams opt for an approach that uses kanban but with the addition of Story Pointing. This can be useful especially when building out a future roadmap with high level story estimates. Mission Control fully supports Kanban + story points.



In this mode reports will default to using story points and all forecasting, projections and roadmap calculations will use story points as long as there is enough data to do so.

Delivery

FREE TIER, TEST PILOT.

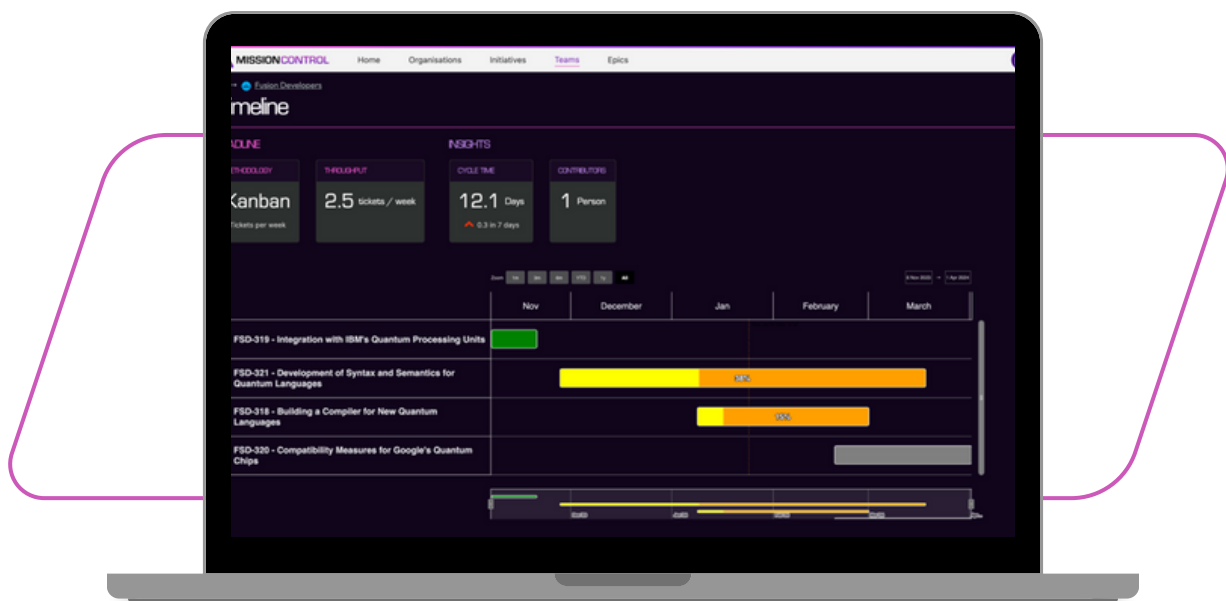
We know that delivering is a core part of agile software development. For that reason we have built features that help teams and leaders to understand the delivery landscape and make better predictions and forecasts. This section lists some of the features that aid with delivery decision making.

Automatic Roadmapping

We understand that maintaining a team roadmap that is an accurate & up-to-date representation of past, present and future work can be a painful & manual process. Especially when this is conducted in tools such as Microsoft Projects, Excel, Miro or Confluence Roadmaps.

Our roadmap automatically adjusts to your team's methodology and ways of working to give you a simple, clear view of the most probable timeline for your individual epics. Meaning every team's roadmap is automatic and clearly visible on their overview page.

For a roadmap to be automatic there must be a single source of truth, for us this is the team's delivery backlog in Jira.



We want to keep the roadmap simple, automatic and approachable, but don't let that simplicity deceive you. The roadmap is built on top of many independent data insights such as teams velocity/throughput, the content of their backlog, the current progress of their active epics etc.

Active epics are represented on the timeline with when they started + the projected end date. The projected end date is regularly updated, so you can see instantly where your epics are likely to land.

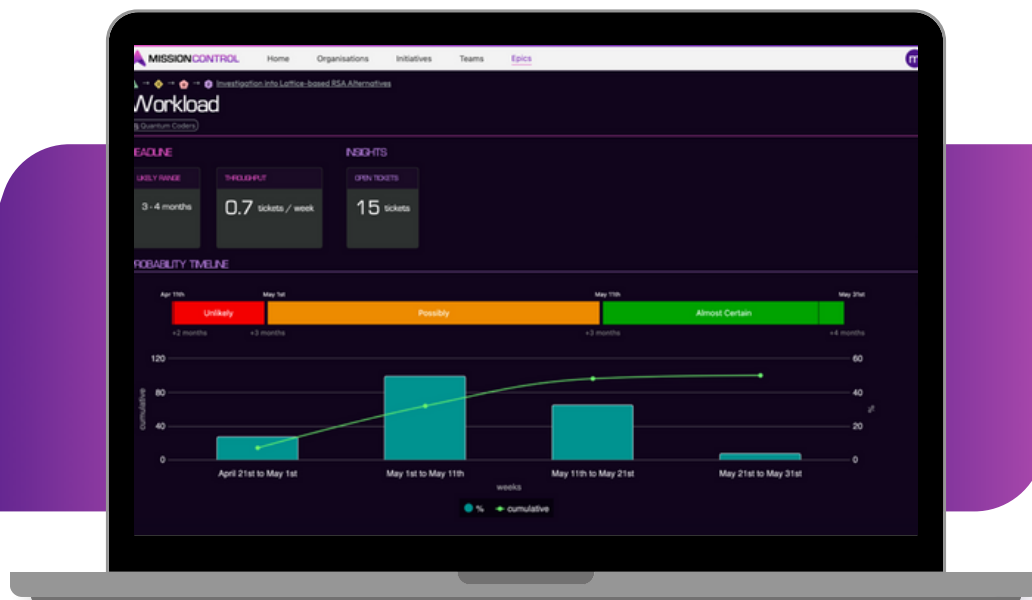
Future epics are also represented on the backlog. In order to achieve this a team must follow a supported 'Working Agreement' where they conduct high level estimates or T-shirt sizing for epics that are occurring in the future (see list of working agreements). Mission Control will use this data plus the historical rate of delivery to approximate delivery of epics that are not yet broken down.

As loosely defined epics get closer to being worked on, they can be broken down by a team and the timeline for delivery will adjust automatically. Complete epics are also represented with their actual start and end dates to help with retrospection.

Forecasting

Most tools on the market make probabilistic forecasting intimidating to use, tricky to set up and hard to interpret.

We take the complication out of forecasting by gathering all the required data points directly from your backlog and using that to model the most likely scenarios. Giving you clarity if you are likely to hit your target delivery dates and time to make adjustments if needed.



The headlines in the Workload report summarise the results of the monte carlo simulation. Providing a likely range for delivery, throughput rate and the total number of open tickets that were used in the calculations.

The probability timeline shows in simple, colourful terms the probability of delivery broken down into useful summaries.

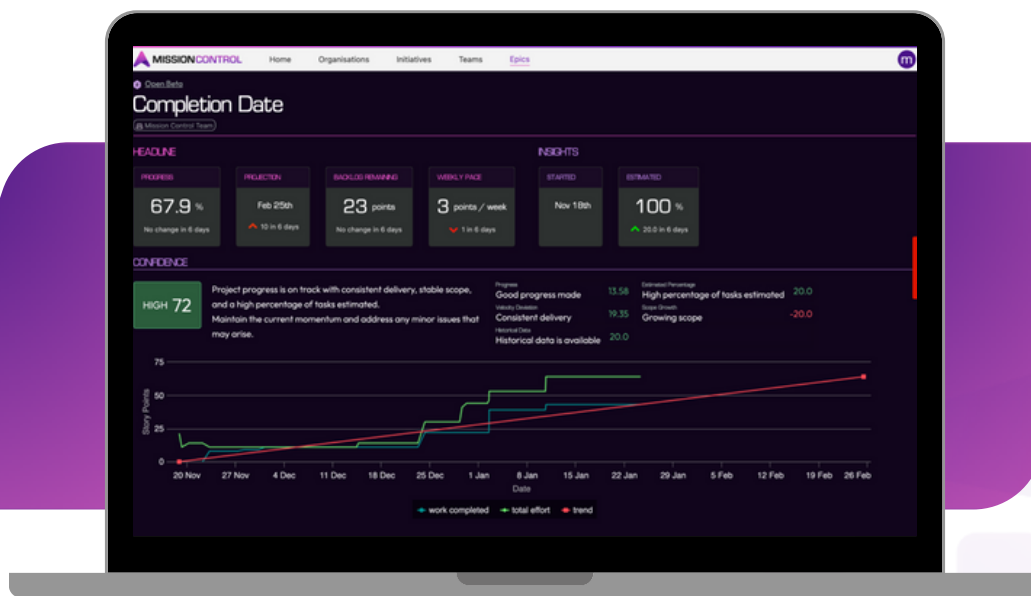
On the main chart (on the bar axis) each date range shows the probability that the work will be completed during that period of time. With a green line showing the probability of completion as time goes on, helping you to quickly identify when the most probable period of time in which the work will be completed or the probability of finishing by a given date. When a target end date is set, a headline will show the % probability of completing by the target date.

The above example shows a probabilistic forecast for a teams epic, but forecasts are conducted for a teams entire backlog, each individual epics (that is in progress), release plus all hierarchical representations (e.g. SAFe's Initiatives, Capabilities and Features).

Projections (Burnup)

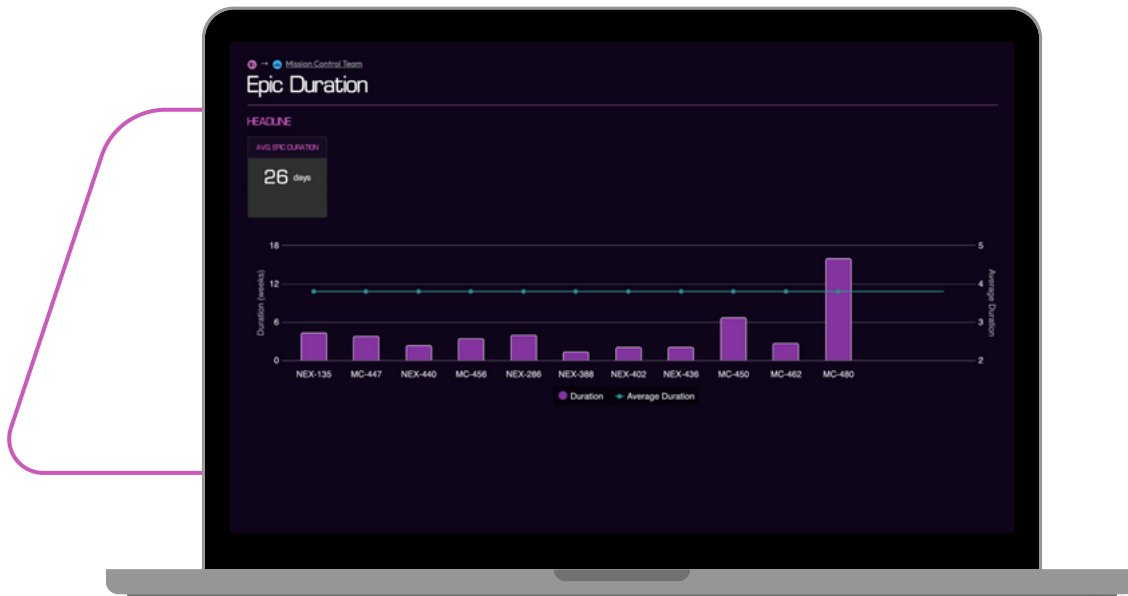
Burnup charts are useful for helping to estimate a container of tickets. They are especially useful when you have a stable scope and consistent delivery, unfortunately in the world of fast paced agile development that is rarely the case.

There are a number of factors which reduce the confidence of burnup charts projections. We've identified a number of the key reasons and added a confidence rating to guide you. The confidence rating looks at insights such as how consistently the work has been completed so far and also whether the scope has been increasing before making an assessment.

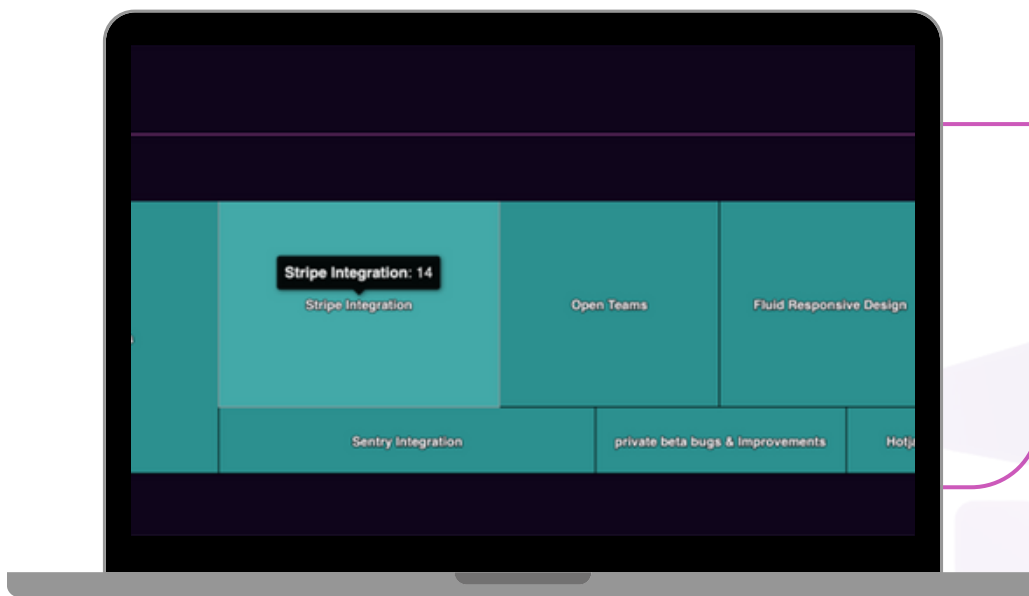


Epic Tracking

We also track various details relating specifically to epics. Namely their duration and total story point size (if using Scrum). Tracking the epic duration is useful as it can give you insight into how long it takes to deliver an epic from start to finish for your team.



Tracking epic size is useful when doing estimation by comparison to produce high level estimates for work that is on the distant horizon (3-6 months time). This enables you to present it on your automatic roadmap whilst spending little actual effort.



Flow

FREE TIER, TEST PILOT.

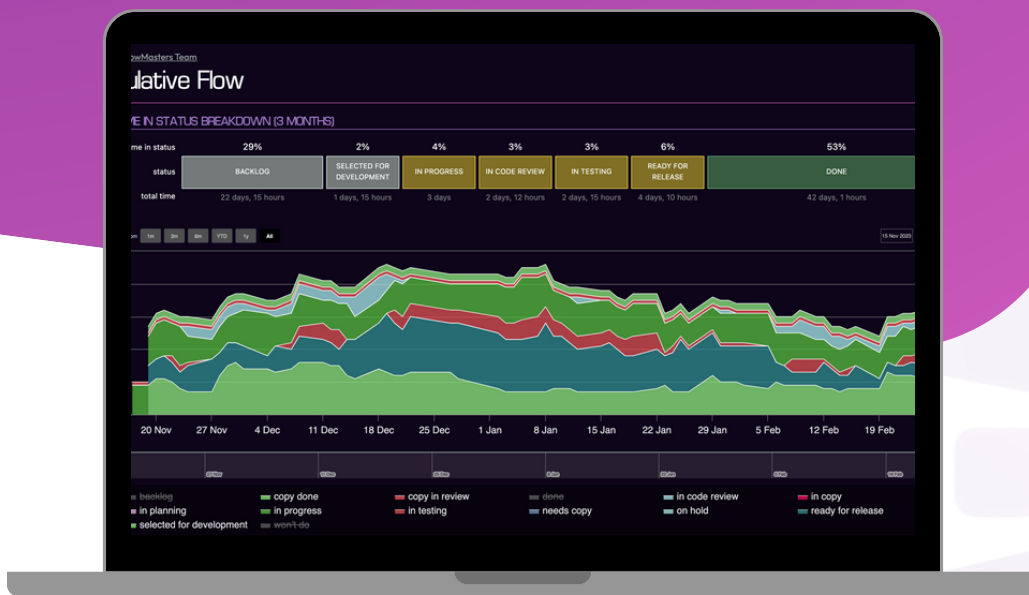
Delivering as a team is important and as we know, flow is important to predictable and consistent delivery. That is why we track a number of data points relating to your team's flow in order to help you build a set of processes that work for your team and their situation whilst keeping delivery as predictable as possible.

Cumulative Flow

It is important to understand the flow of work through your team's processes in order to optimise them. Examining your flow can identify bottlenecks, statuses where work tends to accumulate and a whole host of other insights.

We generate a cumulative flow diagram for your team as well as track the average duration in each status over the last 3 months. This gives a clear picture of the flow through your team's processes.

Cumulative flow diagrams are also created for all epics and releases, allowing you to quickly spot blockages, scope increases and other insights. Mission Control will also use the cumulative flow data to help identify issues in your flow and notify you, for instance, when certain statuses are starting to take longer compared to historical trends.

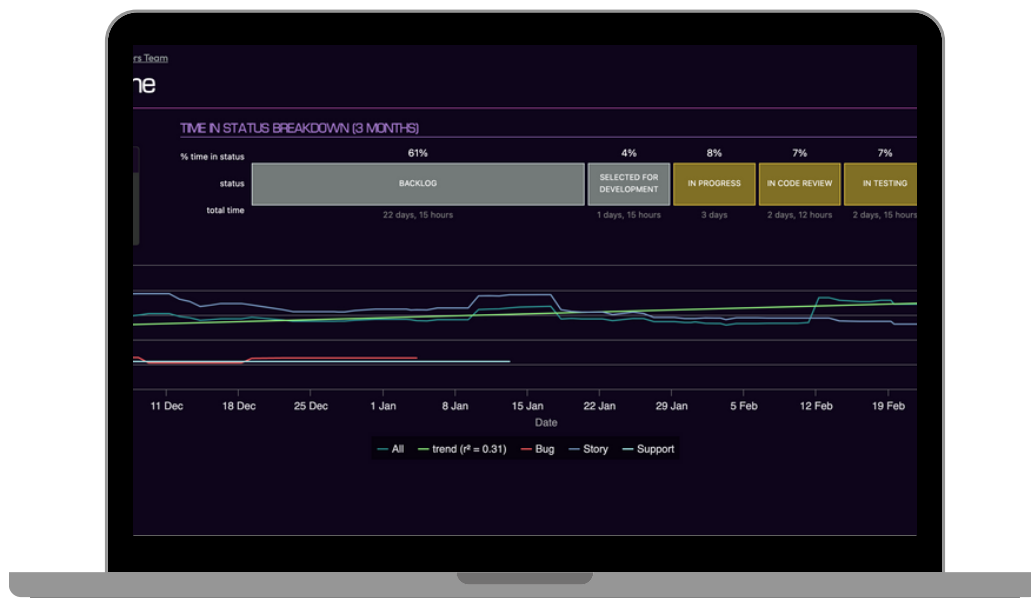


Cycle / Lead Time

Cycle and Lead Time are cornerstone key agile flow metrics. Being able to track them in a consistent manner and using them to understand the flow of work through your team's processes is critical. There are few metrics relating to agile delivery that are undisputed with regards to the positive effect on agile delivery, cycle time and lead time are two of them.

Changes to your team's ways of working, workflow or processes can have a direct impact on their values and you should closely monitor them to see if they are going in the right direction.

We track the cycle and lead time averages over the last 3 months to give an insightful view into how long it takes your team to deliver work. We also track the deviation in order to help you see how consistent your team is with their cycle and lead time.

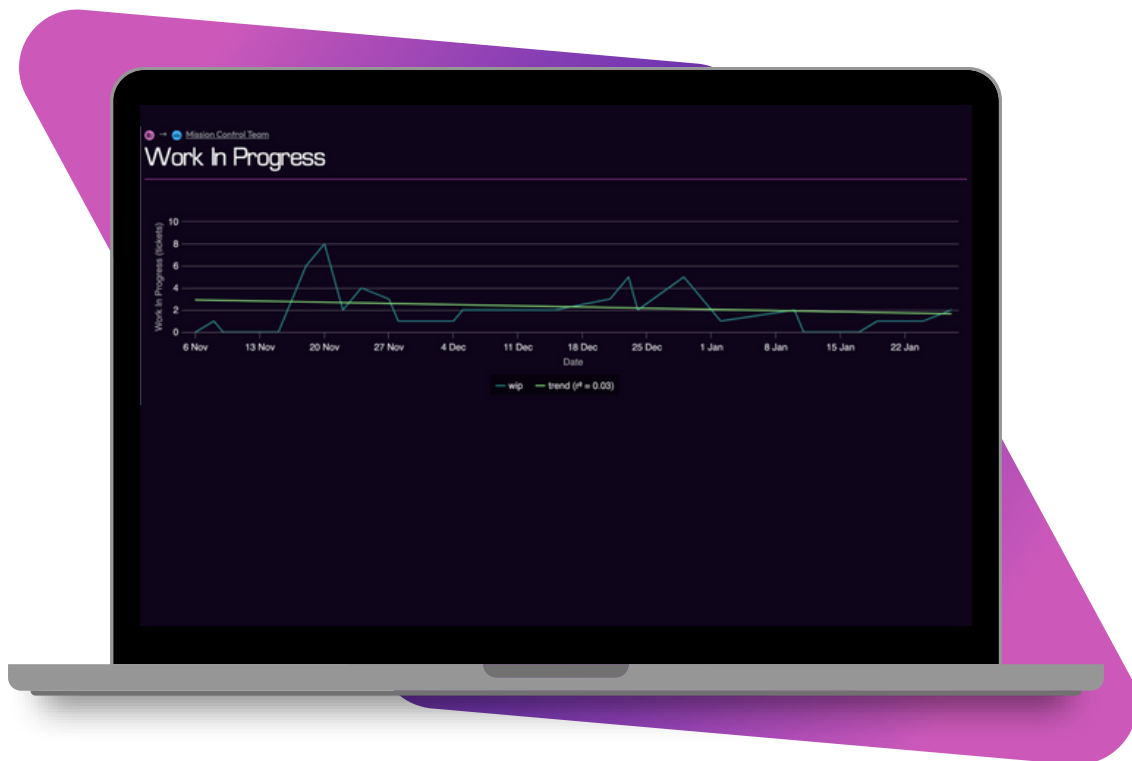


As we keep track of cycle and lead time history, we can indicate when cycle time is increasing and our Insight Engine can help you identify why the increase might have happened so you can further investigate.

Work WIP

Work in progress is keeping track of how many tickets your team is working on at the same time. Keeping WIP low helps promote positive flow through your processes and reduce context switching for your team. It can also promote collaborative working such as pair programming, swarming and mobbing when WIP limits are reached.

We track the historical work in progress (over all 'In progress' statuses) so you can reflect on whether you are keeping your WIP it at the right level.



In future updates you will be able to set an overall WIP limit for your team and receive notifications when you have gone over the limit.

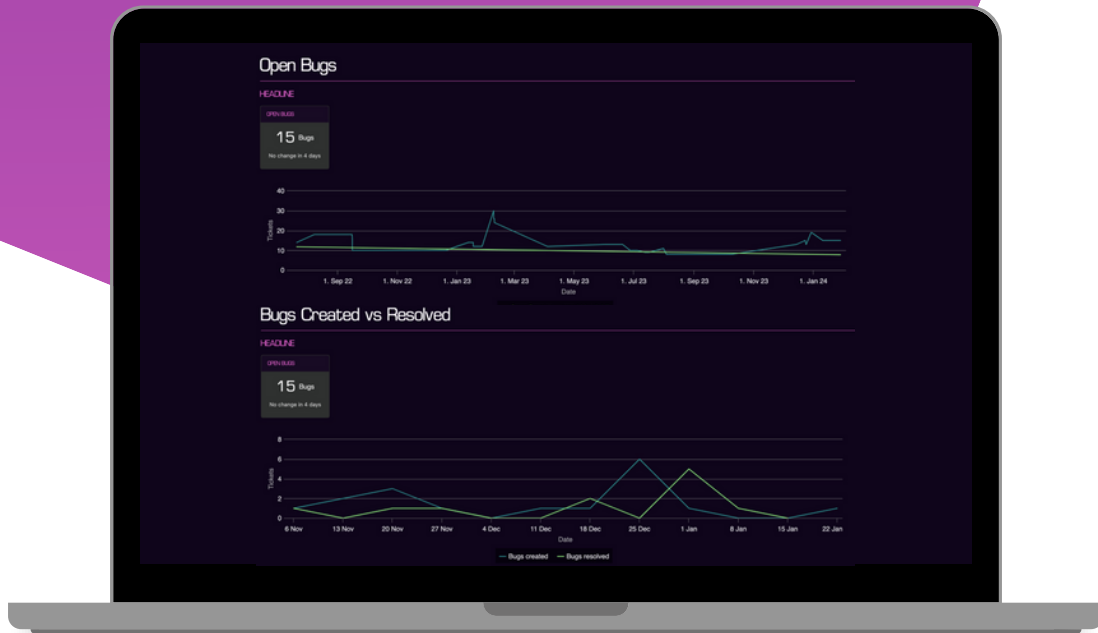
Quality Tracking

FREE TIER, TEST PILOT*

Tracking delivery and agile performance KPIs are important, but are only one part of the picture. As stated in the agile manifesto, working software is the primary measure of progress. That means delivering features is important, but so is making sure it is working and serving your customers well. Mission Control currently tracks quality in three ways.

Bugs

We track bugs that live on your team's backlog. Keeping track of the overall number and as well as tracking created vs resolved statistics. This helps you to trends related to bugs and understand the overall picture.

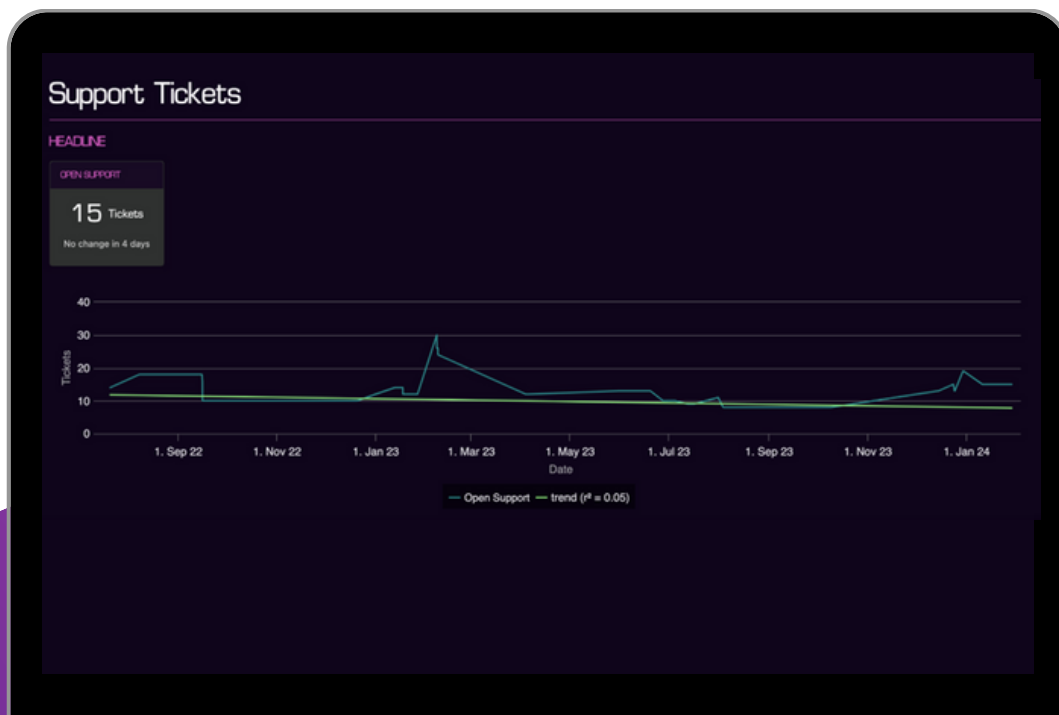


Our insight engine will notify you when there has been a large increase in bugs and prompt you to investigate root causes / fix some of them.

Support Tickets / BAU / Keeping the lights on Bolt on*

In a similar way to bugs, we can also track support tickets. Tracking the total number of open support tickets plus created vs resolved. Support Ticket reports are not currently available out of the box as there is no standard way that teams manage support tickets in Jira. It will require additional configuration in order to fully track this.

Please talk to our [support team](#) and we can discuss the supported approaches for tracking support tickets in Mission Control.



Efficiency

The primary goal of most stream aligned teams is to deliver value for your customer. This is generally achieved through the completion of Story tickets. If your team is spending a lot of time fixing bugs & tech-debt this is something you should be aware of and ensure that this is part of your team's overarching strategy.

In Mission Control we track the efficiency of your team, relating to what percentage of their time is spent delivering stories as opposed to bugs and tech-debt over the last 3 months. Obviously each team is different, with different overarching goals and underlying technologies and infrastructure which will influence where a team spends their time.



Tech Debt

it is important to track and attempt to put a numerical number to the size of tech-debt on your backlog. Research shows that as Tech-Debt grows it increases the length of time required to complete features, increases bugs and reduces developer engagement and satisfaction. That is why it is important to track it and to make sure that enough time is given to the team to pay it back.

Obviously Tech-Debt can only be tracked if it is represented on the backlog, so building a process & discipline about adding Tech-Debt when encountered will help you know how good a shape your product/service is in.

If your team uses story points on Tech-Debt tickets Mission Control will automatically assign tech-debt tickets without an estimate of the average story point size of a Tech-Debt ticket in order to give you accurate representation of Tech-Debt listed on your backlog. If you are not using story points it will list ticket count.

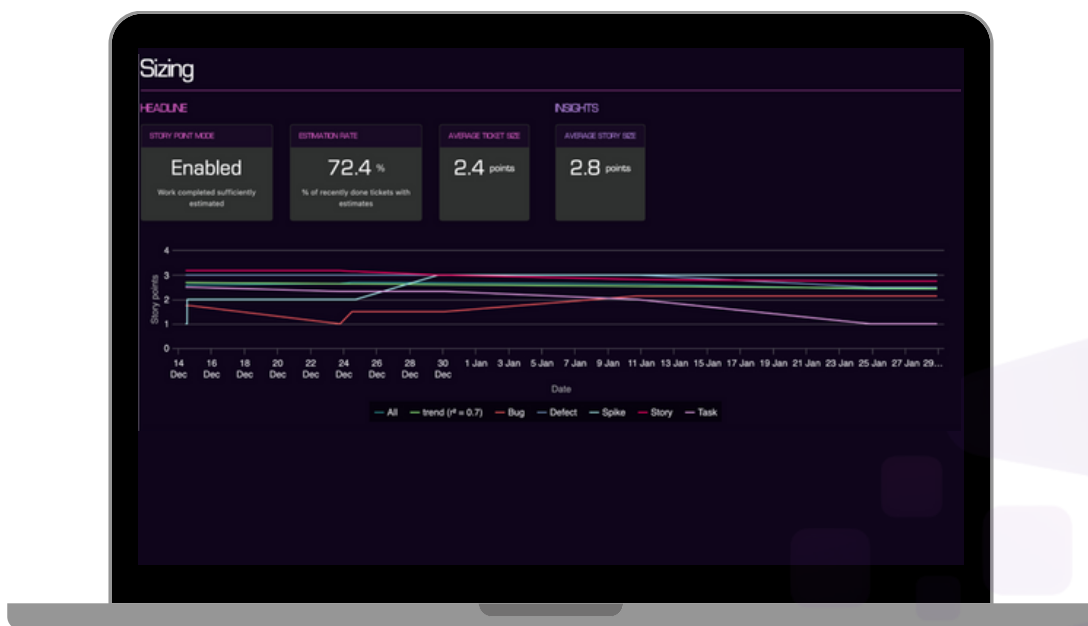


Backlog tracking

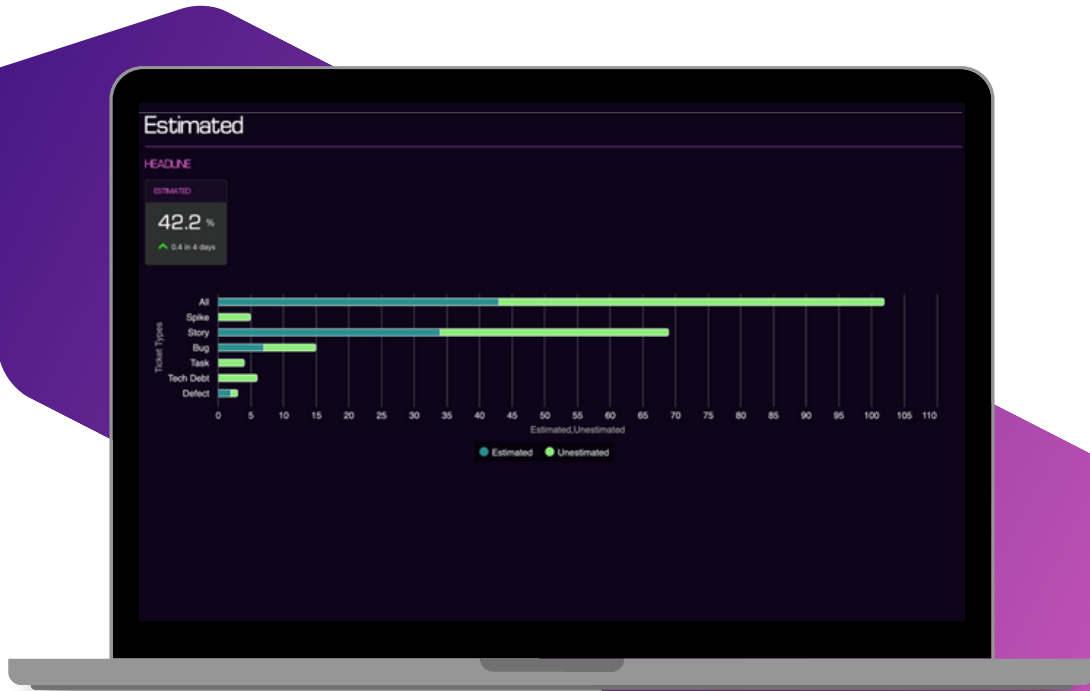
Mission Control helps you keep track of your backlog. When story pointing it will extrapolate an estimated size based on the average story points for each ticket type.



If your team uses kanban, it will show total tickets by ticket type. The report below shows statistics around your teams sizing trends which can be useful for further analysis of estimation by comparison.



We also track estimated tickets on the backlog for epics, teams, releases etc.

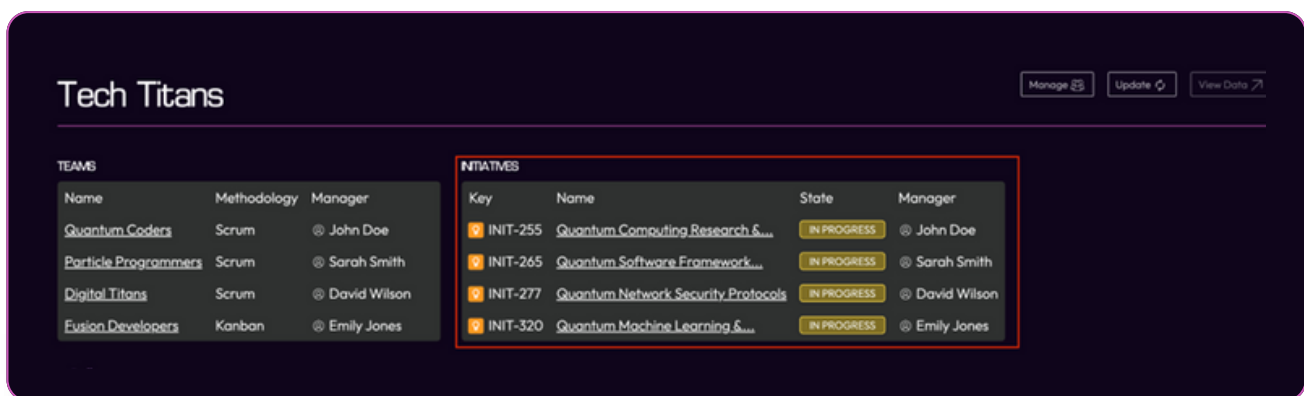


Organisation Features

Initiative Tracking

BOLT ON

Initiative tracking can be enabled inside Mission Control. Once initiatives are tracked for delivery they will appear on the organisation page as seen below:



The screenshot displays the 'Tech Titans' organization page in Mission Control. It features two main tables: 'TEAMS' and 'INITIATIVES'. The 'INITIATIVES' table is highlighted with a red border and contains the following data:

Key	Name	State	Manager
INIT-255	Quantum Computing Research &...	IN PROGRESS	John Doe
INIT-265	Quantum Software Framework...	IN PROGRESS	Sarah Smith
INIT-277	Quantum Network Security Protocols	IN PROGRESS	David Wilson
INIT-320	Quantum Machine Learning &...	IN PROGRESS	Emily Jones

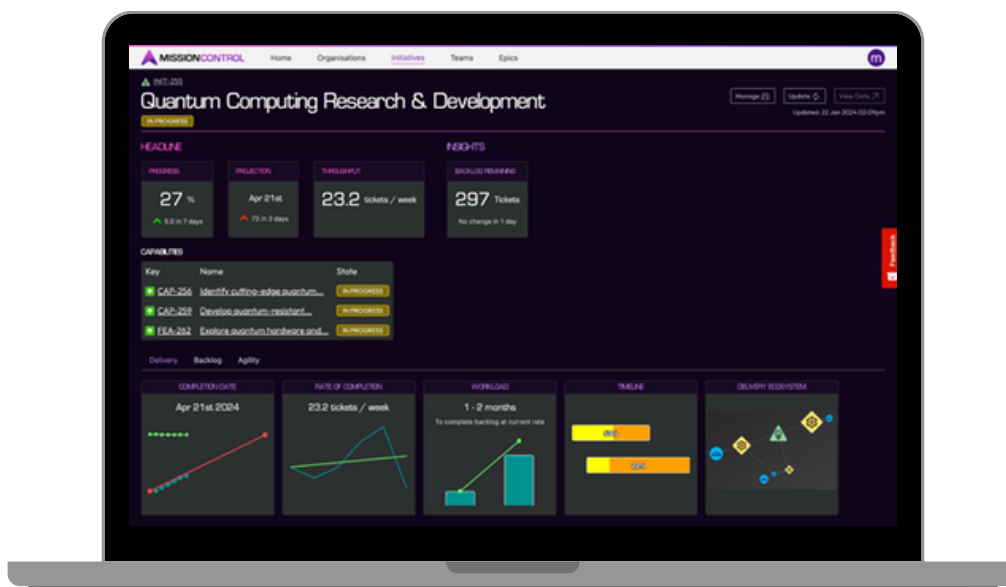
There are a number of different ways to configure Initiative Tracking in Jira, so Mission Control supports the following approaches:

1. Issue Hierarchies from Jira Premium
2. Jira Structure AddOn
3. Manual mapping of hierarchies in Mission Control

If you would like to support issue hierarchies in another way, [please contact support](#).

Mission Control supports as many hierarchy levels as a company wants, but we recommend no more than 4 levels including epics.

Once an initiative is tracked in Mission Control we keep track of issue hierarchies keeping it constantly up to date. We also track the teams doing the work and keep an up to date timeline representing the most up to date projections on their delivery.



We conduct probabilistic forecasting, track scope and produce much the same reports as at epic level. See [live demo](#).

Dependency Tracking

BOLT ON

Mission Control is also able to track dependencies between teams. As there are a number of different approaches to tracking dependencies in Jira, you will need to talk to support so we can configure an approach that works for your organisation.

When a dependency between teams is detected, a section appears at the bottom of the team overview page which tracks those dependencies:

DEPENDENT ON

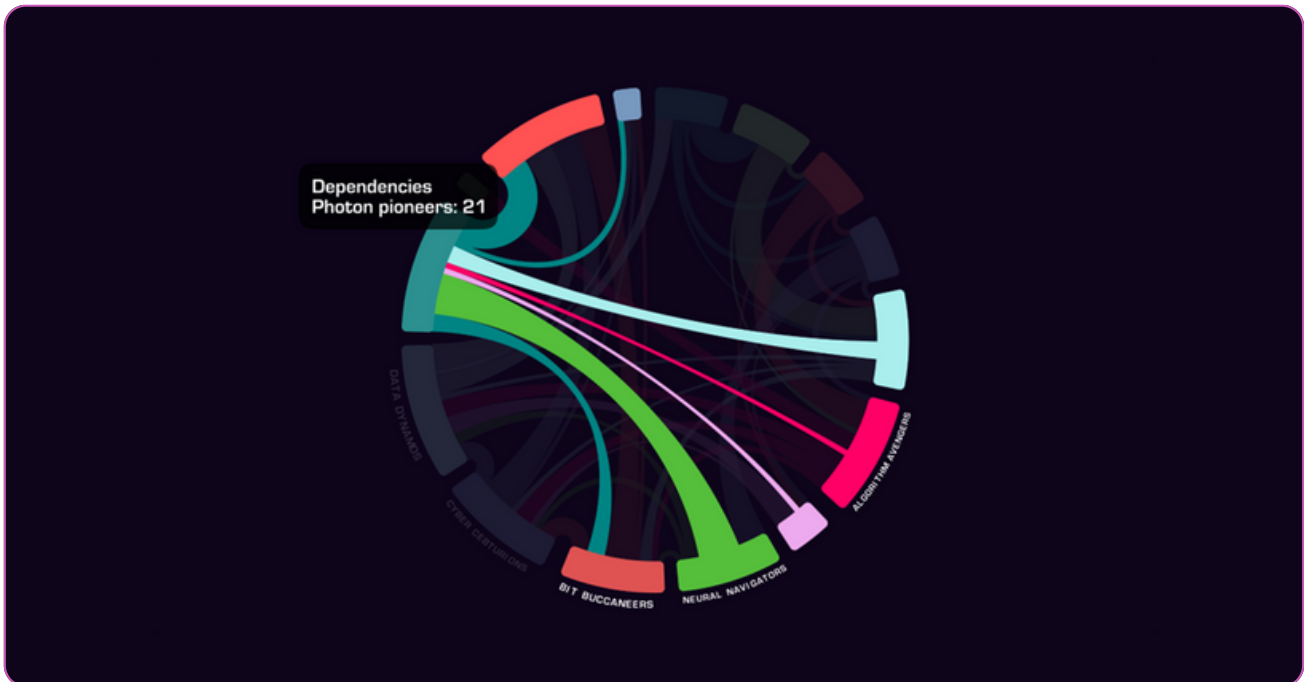
Summary	Status	Progress	Projection	Change
Quantum Analytics Integration is dependent on Digital Titans to finish Cloud Services Optimization	IN PROGRESS	28.6%	7 - 21 days	No Change

The dependency view uses all the delivery and projection data generated by Mission Control to estimate the following:

- ▶ Overall progress as a percentage (tickets or story points)
- ▶ A projection on when it will be completed
- ▶ Any recent changes to that projection

In the future we will be adding notifications so that the team leader is immediately alerted if some work your team is dependent on is delayed or deprioritised and moved down the backlog.

We also support reporting on dependencies at an organisation level:



This tracks the recent & most common dependencies between teams, so you can assess their interactions and contemplate the wider topological map.

Pricing and Plans

At Methodshift, we offer a range of pricing plans designed to suit the diverse needs of our clients. Each plan is crafted to provide value and facilitate the seamless operation of your organisation's project delivery.

First Step: Free 7-Day Trial

Price: Free

Experience the efficiency of Mission Control with no commitments. Our trial includes:

- ✓ Up to 5 sensors* for integration and real-time insights
- ✓ Automatic Roadmapping for project visualisation
- ✓ Delivery tracking and forecasting to stay ahead of schedules
- ✓ Comprehensive analytics with 40 reports and 30 KPIs
- ✓ Daily updates to keep you informed

Start your journey with us at no cost and see how Mission Control can transform your project management landscape.

Test Flight

Price: £2,485 per month

Prepare your teams for a smooth takeoff with our Test Flight plan:

- ✓ Everything included in the Free Trial
- ✓ Enhanced with Working Agreements for organisation & team synergy
- ✓ Insight Engine to delve deeper into data analytics
- ✓ A full day of training per team onboarded for a streamlined experience

Get your teams acclimated to Mission Control's environment and ready for advanced Agile Delivery.

Rocket Ship

Price: £4,885 per month

Elevate your project delivery with our premium Rocket Ship plan:

- ✓ All Test Flight features for a comprehensive management suite
- ✓ Expand to up to 20 sensors* for extensive coverage
- ✓ Dependency and Initiative Tracking for advanced project coordination

This plan is the ultimate solution for those ready to revolutionise their delivery process and propel their organisation forward.

Bespoke Configuration: Contact Us

For a solution tailored exclusively to your organisation's needs, our Bespoke Configuration is the perfect choice. Features include:

- ✓ Custom pricing per sensor, to fit your unique scale and complexity
- ✓ Access to an AI Sidekick - your personal assistant in project delivery

Connect with our sales team to craft a plan that's as unique as your organisation.

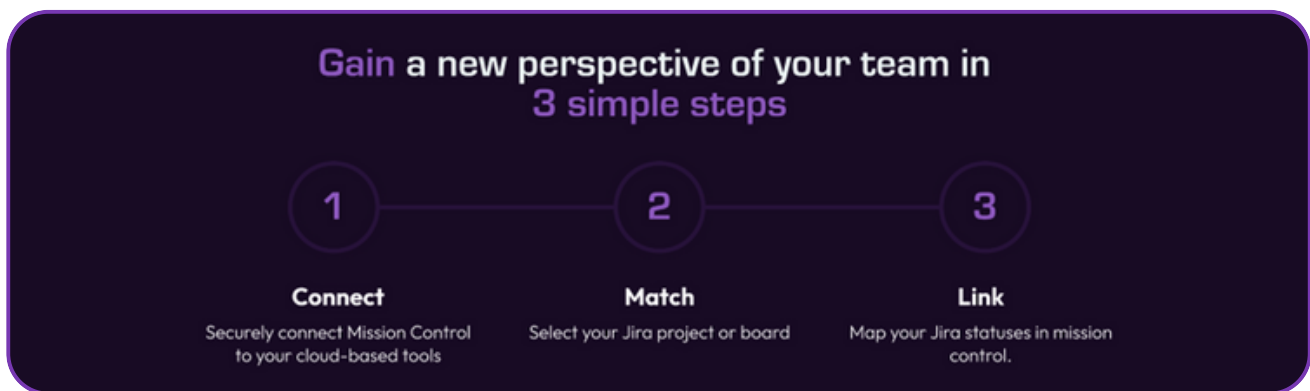
**Please note that "sensors" in our context are integration points that provide real-time insights and monitoring to ensure your projects remain aligned with strategic goals, just like sensors navigate a spacecraft.*

Next Steps

Whether you're looking to explore the capabilities of Mission Control, seeking personalised advice, or ready to witness our solution in action, we've made it easy for you to take the next step:

Start Your Free Trial:

Discover how Mission Control can streamline your operations. [Start your journey now](#) and witness the transformation in your project management approach.



Book a Consultation:

Get tailored advice for your unique challenges. [Schedule a session](#) with our experts and begin your path to organisational excellence.

Request a Demo:

See Mission Control in action and understand the impact it can have on your delivery process. [Book a demo](#) today and learn how our features can align with your goals.

Subscribe to Our Newsletter:

Stay informed with the latest updates, insights, and tips in project management. [Subscribe](#) to our newsletter and never miss a beat.

Connect with Sales:

Have questions or need a custom solution? Our sales team is ready to help. Reach out at sales@methodshift.co.uk for assistance tailored to your needs.

FAQ

Here are a list of frequently asked questions by our customers.

Q How does Mission Control work?

A Mission control for Jira cloud is a cloud based analytics platform that processes your team's data in order to give you insights into its agile practices & delivery.

Simply map your team's jira statuses to those in Mission Control and we give you a clear picture into your team's current work, agile kpis, roadmap and projected completion dates using the latest forecasting approaches.

Q Does we support scrum/kanban/etc methodology?

A Mission Control supports a range of methodologies.

It will intelligently uncover what methodology your team is using and adjust its reporting accordingly.

We currently directly support kanban, scrum, kanban + story points, but it is designed to work off agile delivery fundamentals so works for any teams following agile practices.

Q What are the minimum requirements?

A The only requirement to getting started with Mission Control is that your team can clearly outline their backlog in Jira.

This means having a Jira board which is associated with a single team. Without this it is impossible to give accurate insights.



How does authentication work?



We use OAuth2 which is the most secure method for integrating with Jira Cloud, using the latest in modern day authentication and encryption.

Any user can authenticate through this method and are in complete control of what data an external application can access.

No passwords are stored and Mission Control will only access the data related to the chosen jira project. Other integration methods are available outside of open beta, please contact us for more information.



How do you handle data?



We prioritise the security and privacy of your data throughout its lifecycle.

Data in transit is protected using TLS 1.3 encryption, while data at rest is secured with AES-256 encryption.

Our systems undergo automatic monitoring and patching to swiftly address vulnerabilities, complemented by regular security audits to ensure robust protection.

While adhering to data minimization principles, we only process and store the essential data necessary to uniquely identify tickets or epics in our software and to deliver insights and reports.

This approach ensures we do not store your organisation's broader data or share it with any third parties.

Our practices are in full compliance with GDPR, offering you the right to request data deletion at any time through [our support](#). If you have concerns or questions about data security or privacy, we encourage you to contact us directly.



How long does it take to set up?



For a medium sized team it takes 1-2 minutes to onboard from start to finish.

Q I have a feature request, how can I submit it?

A We are always happy to hear about what would make Mission Control better. Feel free to submit a request through the feedback button on the right hand side or contact us at info@methodshift.co.uk

Q I am interested in becoming a partner/reseller of Mission Control, who do I contact?

A partners@methodshift.co.uk

Q Who do I contact regarding sales?

A sales@methodshift.co.uk

Q Who do I contact regarding support?

A support@methodshift.co.uk